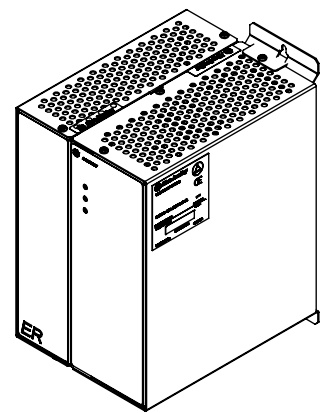


REVISIONS					
REV	EC	REVISION DESCRIPTION	DATE	REVISED BY	APPROVED

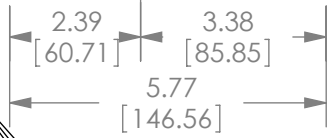
Ø .187 VENT HOLES IN TOP AND BOTTOM FOR EXHAUST. (MAINTAIN 2" [50.8] CLEARANCE FOR PROPER COOLING)

SYSTEM STATUS INDICATORS:  
 - OUTPUT OVERLOAD FAULT  
 - LINE  
 - ALARM

DIN RAIL MOUNTING CLIPS (WILL MOUNT ON STANDARD 35MM X 7.5MM DIN RAIL (EN 50022, BS 5584))



E.R. MODULE (E.R. MODELS ONLY)



9.65 [244.98] PANEL MOUNTING CENTERS

10.15 [257.68] MAX. WITH PANEL MOUNTING FLANGES

9.30 [236.31]

- NOTES:  
 1. CHASSIS IS NEMA TYPE 1 (IP 20)  
 2. DIMENSIONS: INCHES [MILLIMETERS]  
 3. THIS DRAWING COVERS THE FOLLOWING ROCKWELL AUTOMATION MODELS:

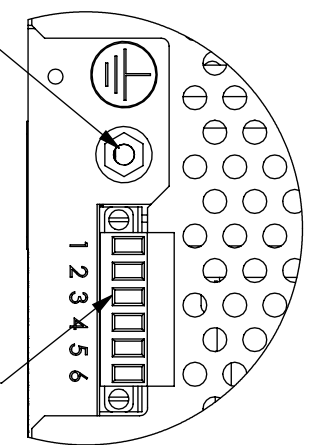
MODEL NUMBER	WEIGHT lbs. (kg.)
1608N-006A120V2S	6.7 (3.0)
1608N-006A120V2E	11.2 (5.0)
1608N-002A208V1S	6.3 (2.9)
1608N-002A208V1E	9.5 (4.3)
1608N-003A208V1S	6.7 (3.0)
1608N-003A208V1E	11.2 (5.0)
1608N-003A230V2S	6.7 (3.0)
1608N-003A230V2E	11.2 (5.0)
1608N-003A240V1S	6.3 (2.9)
1608N-002A240V1E	9.5 (4.3)
1608N-003A240V2S	6.3 (2.9)
1608N-003A240V2E	9.5 (4.3)
1608N-003A240V1E	11.2 (5.0)

PANEL MOUNTING BRACKETS DESIGNED TO ACCOMMODATE #8 MOUNTING HARDWARE

WIRE ENTRY INTO BOTTOM OF CONNECTOR.

PANEL MOUNTING BRACKETS TOP AND BOTTOM. (INCL.)

#8-32 GROUND STUD (TORQUE 17 LB-IN [1.9N-M])



AC AND ALARM CONTACT CONNECTIONS. TOUCH-SAFE SCREW TERMINALS WILL ACCEPT 12 - 26 AWG WIRE. (TORQUE 5 LB-IN [.56N-M]) CONNECTOR IS REMOVABLE.

DETAIL A TYPICAL ON BOTH 500VA AND 750VA

			<small>CONFIDENTIAL AND PROPRIETARY INFORMATION. THIS DOCUMENT CONTAINS CONFIDENTIAL AND PROPRIETARY INFORMATION OF ROCKWELL AUTOMATION, INC. AND MAY NOT BE USED, COPIED OR DISCLOSED TO OTHERS, EXCEPT WITH THE AUTHORIZED WRITTEN PERMISSION OF ROCKWELL AUTOMATION, INC.</small>				
			DESCRIPTION <b>Main assy., 500VA &amp; 750VA</b>				
<small>UNLESS OTHERWISE SPECIFIED, DIMENSIONS ARE IN INCHES PER ANSI Y14.5</small> <small>DEC PL INCHES MILLIMETERS</small> .X .060 1.52 .XX .045 1.14 .XXX .015 0.38 <small>TOLERANCES ON ANGLES ±1.0°</small>	DRAWN <b>RHM</b>	DATE <b>2/18/16</b>	PART NUMBER <b>99-01192</b>	REVISION <b>A00</b>	THIRD ANGLE PROJECTION 	SIZE <b>B</b>	SHEET <b>1 OF 1</b>